



W  
WHITES

7 Belgrave Terrace York Road, Salisbury, SP2 7AP

£1,650 PCM

## About The Property

A delightful modern four-bedroom end-terrace property situated within walking distance of the city centre, benefiting from two allocated off-street parking bays. The accommodation comprises a well-proportioned front room on the ground floor, which could serve either as a home office or a small sitting area. There is also a downstairs W/C that doubles as a utility room.

At the rear of the ground floor, you'll find a modern kitchen/diner featuring a Neff gas hob and electric fan oven, along with a built-in washing machine. The kitchen benefits from double glass doors that open out to the rear garden.

The first floor consists of a spacious lounge at the front of the property, a family bathroom with a thermostatic shower over the bath, and a secondary bedroom at the rear.

On the second floor, you'll find a large primary bedroom with an ensuite bathroom, along with two additional bedrooms at the rear.

Outside, the rear garden is a good-sized, low-maintenance area, predominantly paved but also featuring a sizable flower bed and a garden shed. Additionally, the garden benefits from rear access.

The property is offered unfurnished, heated by gas central heating, and comes with two allocated parking spaces.



4



2

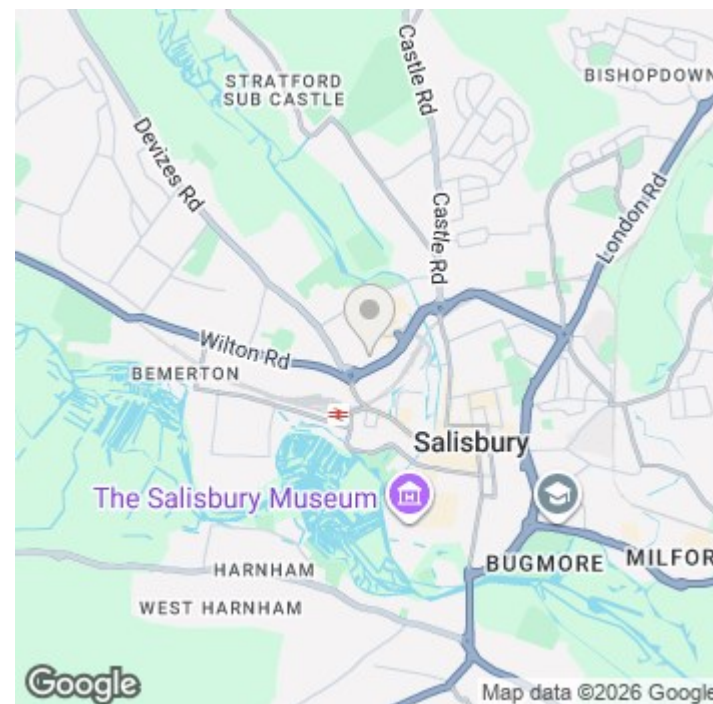


2



1128.00 sq ft

- Four bedrooms
- Two bathrooms
- Central location
- Walking distance to train station
- Two allocated parking spaces
- Modern fixtures and fittings
- Offered unfurnished
- Long term tenancy
- Available now
- Gas central heating



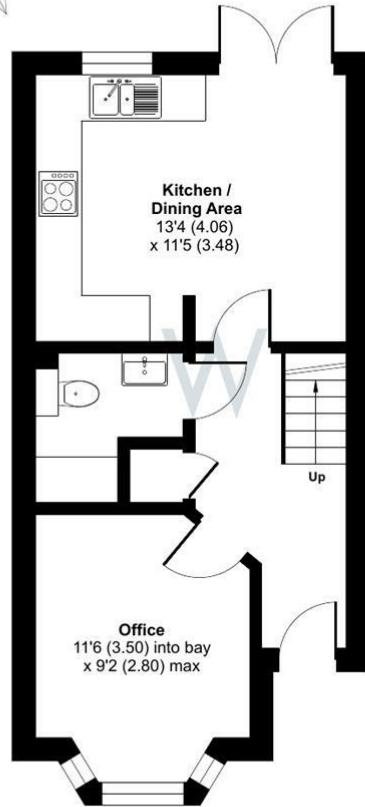




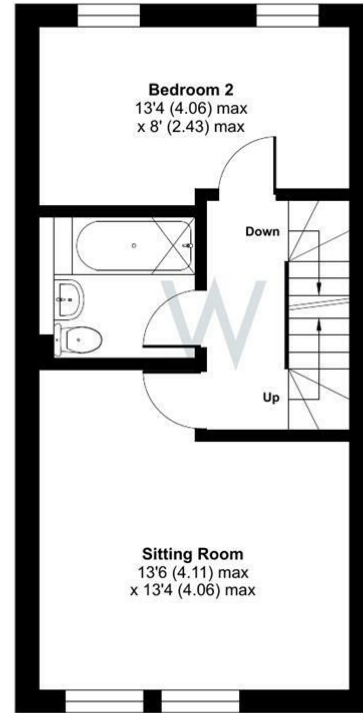
## Belgrave Terrace, York Road, Salisbury, SP2

Approximate Area = 1128 sq ft / 104.7 sq m

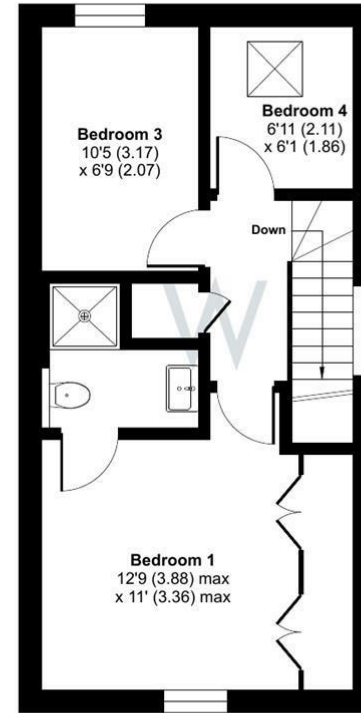
For identification only - Not to scale



GROUND FLOOR



FIRST FLOOR



SECOND FLOOR



Floor plan produced in accordance with RICS Property Measurement Standards incorporating International Property Measurement Standards (IPMS2 Residential). © nchecom 2026. Produced for H W White Ltd. REF: 1476929



## Further Information

Let available date: 19th June 2026  
NB: This date is provisional and will only be confirmed once referencing has been successfully completed.

Property type: House - End Terrace

Furnish type: Unfurnished

Deposit: £1,900

Local authority: Wiltshire

Council Tax: Band D

EPC: C(79)

### Energy Efficiency Rating

	Current	Potential
Very energy efficient - lower running costs		
(92 plus) <b>A</b>		
(81-91) <b>B</b>		
(69-80) <b>C</b>	79	83
(55-68) <b>D</b>		
(39-54) <b>E</b>		
(21-38) <b>F</b>		
(1-20) <b>G</b>		
Not energy efficient - higher running costs		
<b>England &amp; Wales</b>	EU Directive 2002/91/EC	